



August 22, 2011

THE CHANNEL MARKER

Rotary Club of Pearl Harbor

Celebrating 61 Years of Service!

IN THE WAKE

MEETING REPORT Aug 15, 2011

CALL TO ORDER

President **Connie Kraus** welcomed members and guests to the 2,816th meeting of the Rotary Club of Pearl Harbor where we look toward the future, keep our hearts in the present, and Reach within to Embrace Humanity!



Jeff Deer



Ken Brown



Debbie Deibler

Providing our inspiration was **Jeff Deer**, inducted July 1, 1981, he was sponsored by **Herb Robish**. **Jeff** owns Bonded Materials Company.

Leading us in the pledge of allegiance was **Ken Brown**, inducted Nov. 25, 1974, he was sponsored by **Herb Robish**. **Ken** works with Seawind Tours & Travel, Inc.

Debbie Deibler led us in singing Zippity Doo Dah, inducted Nov. 26, 2010, she was sponsored by her dad, **Robert Deibler**. **Debbie** is a former Air Force Logistics Manager.

RECOGNITION

Acting Sergeant-at-Arms **Debbie Deibler** recognized Current D5000 Leadership: District Governor **Laurie Yoshida**, **Melvin Kumasaka** (ADG North Central Oahu), **Hal Darcey** (Group Study Exchange Chair), **Steve Dyer** (District Alumni Co-Chair), **Kim Moore** (RYLA Co-Chair). Rotarians within D500: **Alan Lloyd** (Windward Oahu), **Dave Berry** (Ala Moana), **Eberhard Man** (Metro), **Ron Watanabe** (Metro), **Lee Mansfield** (Metro), **Sean Hoban** (Pau Hana). Guests of RCPH members: **Jackie Hites** (**Connie Kraus**) **Jim Gardner**, (**Willa Gardner**).

Rotary International
www.rotary.org

President Kalyan Banerjee

District 5000

Governor Laurie Yoshida
Asst. Dist Governor Mel Kumasaka

Chartered June 14, 1950



Rotary Club of Pearl Harbor

Club Officers

President..... Connie G. Kraus
President-Elect..... Douglas S. Taylor
Vice President..... Lester M. Hunkele III
Secretary..... Debbie Deibler
Treasurer..... Stella Kimura
Past President..... Elouise P. Kaanaana
Sergeant-at-Arms..... Lori Williams

Directors

Club Service..... Jeffery J. Sarver
Service Projects..... Shirley Robinson
International Service... William H.Q. Bow
New Generations..... Kimberly B. Moore
Membership..... Ernest G. Anderson
Public Relations..... Raymond Noh

Interest Clubs Sponsored

Aiea High School
Farrington High School
Moanalua High School
Radford High School

Sister Clubs

Hiroshima Southeast, Japan
Tokyo Osaki, Japan
Avachinsky, Russia

Meeting Schedule

Mondays, 12:00 Noon
Oahu Country Club
150 Country Club Road

Channel Marker Published by
Harvey Gray

IN THE WAKE



Mel Kumasaka Hal Darcey Dave Berry



Connie & Sean Hoban

President **Connie** asked **Sean Hoban**, who is the Hawaii host for the GSE team to introduce the members from Quezon City Philippines, Rotary D3780. Team leader **Roberto Montellano**, PP of Rotary Club of Timog, Quezon City; team members: **Chryslin Monica Laohoo**, a preschool teacher, **Maria Oliva**, a television



Rotary District 3780 GSE Team

executive producer, **Erika Marie Narciso**, bank marketing and product manager, and **Kathleen Anne Cruz**, an environmental scientist.

CELEBRATIONS

President **Connie** recognized member birthday: **Les Hunkele**, August 16. Spouse birthday: **Kathy Bow**, August 16, 2011.

ACKNOWLEDGEMENTS

“I Can” donators: **Alice and Bee Clark, Connie and Gene Kraus, Donna and John McLaughlin, Jeff**

Sarver, Alan Lloyd

HAPPY BUCKS

Happy Bucks: **Jeff Deer**, \$20 to the club because he is happy. **Augie Rey**, \$20 to the club in honor of his wife’s birthday next week. **Les Hunkele**, \$26 to TRF in celebration of his birthday. **Ellie Kaanaana**, \$15 to TRF in recognition of her daughter being hired as the Head of the Adult and Children’s Activities at the new Disney Aulani Hotel at Ko’Olina. **Lenny Katsarsky**, \$45 to TRF in celebration of his 45th wedding anniversary. **John McLaughlin**, \$10 to TRF because Donna is working full time till



Debbie & Lenny



Jackie Hites

December, but sad that she can’t come to the meetings. **Kim Moore**, \$20 to TRF for safe travels. **Jeff Sarver**, \$10 for finally finishing laying tile in his house. **Mel Kumasaka**, \$10 to the club, he is happy to be here again. **Laurie Yoshida**, \$3 to club because today she flew from Kauai to Oahu than back to Kauai and back to Oahu.

Jackie Hites, \$5 because she is happy to be attending the meeting today. **Eberhard Man**, \$5 to the club because he is happy to be driving a dentist from PI around, now he knows where to go to get his teeth checked. **Dave Berry**, \$5 to the club because he signed up as a Benefactor.

ANNOUNCEMENTS

Raymond Noh reminded every one of the Polo party this coming Sunday afternoon.

NEW MEMBER INDUCTION

DG **Laurie** inducted **Willa Gardner** as the newest and 43rd member of our Rotary Club. **Willa** pledged to attend our regular meetings, participate in the functions and enjoy the fellowship of the Rotary Club. **Connie**

IN THE WAKE



Connie, Willa, Jim & Laurie



Connie, Laurie, Raymond & Ellie

Kraus is Willa's sponsor and her husband **Jim** was on hand to show his support.

DG **Laurie** presented **Ellie Kaanaana** with her **Paul Harris +3** pin and **Raymond Noh** with his **Paul Harris +1** pin.

PROGRAM

Connie introduced our Rotary D5000 District Governor **Laurie L.K. Yoshida**

On April 1, 2002, **Laurie Yoshida** joined Rotary as a charter member of the Rotary Club of Kalepa Sunrise. From that point forward, She has been on the Board of the club every year including the last 3 years as club Treasurer. As a centennial President, **Laurie** was fortunate to serve during Rotary's year of celebration. **Laurie** also served as Assistant District Governor 2007-2009 and assisted with membership at the district level during the 2009-2010 Rotary year.

Laurie is President and C.E.O. of Successful Planning, an Event Planning and Project Coordination company. She is able to combine her experience in Management, Marketing, and Advertising along with her hands on experience in Event Planning. **Laurie** was the Governor's Liaison for Kaua'i from 2003-2010. She represented the Governor on Kaua'i and facilitated

issues and complaints through the various state departments. **Laurie** is also the former President of the Kaua'i Chamber of Commerce and the former Marketing Director of the Hawai'i Osteoporosis Center. She was also an Account Executive for Oceanic Cablevision where she sold cable advertising and was a Pharmaceutical Sales Representative. **Laurie** earned a Bachelor's of Business Administration from the University of Hawai'i at Manoa. **Laurie** and her husband **Vernon** have 2 children **Brittney** (almost 13) and **Christopher** (21)

RCPH is the 41st Rotary Club she has addressed on her initial tour of clubs in District 5000 – three to go! Her home club is Kalepa Sunrise on Kauai.

Laurie stressed two important events that made her a Rotarian for life. When her own daughter received a dictionary at school from another Rotary Club, and many of the students didn't understand that the dictionaries were not being loaned like many school books, but that the students owned the books – and could write in them. It became a teaching moment to let her daughter know how fortunate she was compared to many other children, and how much Rotary does for others.

The second was on a non-Rotary trip when she stopped to visit a new housing area in the Philippians. A Rotary club from Masui, PI had donated the funds used to build some of the housing units that cost \$1,000 apiece. When the residents found out that she was from Rotary in Hawaii, the children danced to show their gratitude for the help they received through Rotary. Again, she realized how much Rotary does for others in need.

Laurie asked our members to do two things:

Give something to The Rotary Foundation this year, and develop a habit of contributing to TRF.

Invite business and community leaders to a Rotary workday or fellowship event as a potential Rotarian guest. These events will be far more



Connie & Laurie

IN THE WAKE

understandable to a newcomer than attending a regular meeting.

President **Connie** thanked **Laurie** for addressing the membership and asked her to sign a children's book, *The Little Hawaiian Rainbow* by **Stacy Daum**, which will be donated to Aiea Elementary School in her honor.

ADJOURNMENT

Les Hunkele led us in the Four-Way-Test.

ROTARY HISTORY

Rotary International Presidents

(Continued from August 15)

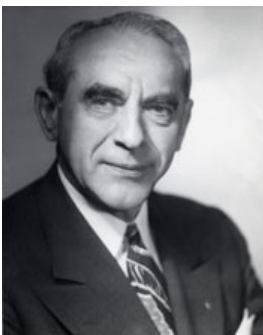
1945-46

Thomas A. Warren
Rotary Club of
Wolverhampton,
Staffordshire, England



“There always should be differences — intelligent and honest differences — because that is the way of progress. But we must cultivate a universal will to get along with one another. And therein lies an opportunity for Rotary.”

The Rotarian, July 1945



1946-47

Richard C. Hedke
Rotary Club of Detroit,
Michigan, USA

“Let us re-emphasize helpfulness. I know no better way of saying it. Let us this year measure our progress by the yardstick of the service that we render to

our fellow men.”

The Rotarian, July 1946

ON THE HORIZON

Upcoming Meetings & Events

1947-48

S. Kendrick Guernsey
Rotary Club of Jacksonville,
Florida, USA



“Each of us, as Rotarians, and as citizens, has a direct responsibility for the future. Let us strive, harder than we have in the past, to understand those great forces which are loose in the world of today. When we do, the force of an enlightened public opinion will harness those very forces to do the bidding of mankind.”

1948 RI Convention

August Membership and Extension Month

Aug 22: Diane Cadinha, How Exercise & Diet can preserve your muscles

Aug 29: Kimo Carvalho, Hawaii Energy

September New Generations Month

Sep 5: Dark—Labor Day

Sep 12: Evan Fujimoto, Topic TBA

Sep 19: Shriners Hospital Lunch and Tour

Sep 26: Neil Tepper, “The Creativity Doctor”

THE 4-WAY TEST

Of the things we think, say or do

1. Is it the TRUTH?

‘Oia ‘i‘o i keia o‘lelo

2. Is it FAIR to all concerned?

Kupono ia ka kou

3. Will it BUILD GOODWILL and

BETTER FRIENDSHIPS?

Kukulu lokomaika‘i a me pilialoha maika‘i a‘e

4. Will it be BENEFICIAL to all concerned?

Pono ia ka kou