



February 27, 2012

THE CHANNEL MARKER

Rotary Club of Pearl Harbor

Celebrating 61 Years of Service!

IN THE WAKE

MEETING REPORT Feb 13, 2012

CALL TO ORDER

President Connie Kraus welcomed members and guests to the 2,838th meeting of the Rotary Club of Pearl Harbor where we look toward the future, keep our hearts in the present, and Reach within to Embrace Humanity!

Rotary International
www.rotary.org

President Kalyan Banerjee
District 5000

Governor Laurie Yoshida
Asst. Dist Governor Mel Kumasaka

Chartered June 14, 1950



Rotary Club of Pearl Harbor

Club Officers

President..... Connie G. Kraus
President-Elect..... Douglas S. Taylor
Vice President..... Lester M. Hunkele III
Secretary..... Debbie Deibler
Treasurer..... Stella Kimura
Past President..... Elouise P. Kaanaana
Sergeant-at-Arms..... Lori Williams

Directors

Club Service..... Jeffery J. Sarver
Service Projects..... Shirley Robinson
International Service... William H.Q. Bow
New Generations..... Kimberly B. Moore
Membership..... Ernest G. Anderson
Public Relations..... Raymond Noh

Interest Clubs Sponsored

Aiea High School
Farrington High School
Moanalua High School
Radford High School

Sister Clubs

Hiroshima Southeast, Japan
Tokyo Osaki, Japan
Avachinsky, Russia

Meeting Schedule

Mondays, 12:00 Noon
Oahu Country Club
150 Country Club Road

Channel Marker Published by
Harvey Gray



Willa Gardner



Harvey Gray



Jeanine Walker

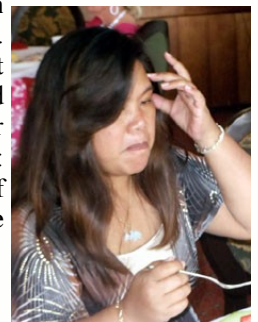
Providing our inspiration was **Willa Gardner** inducted Aug. 15, 2011 and sponsored by **Connie Kraus**.

Leading us in the pledge of allegiance was **Harvey Gray** inducted Sept. 8, 1997 and sponsored by **Bob Deibler**.

Our song leaders were guests **Bill and Jeanine Walker**; they led us in singing "You are My Sunshine".

RECOGNITION

Acting Sergeant-at-Arms **Ernie Anderson** welcomed Past District Governor **Jim Varner**. Current District 5000 Leadership: District Alumni Co-Chair **Steve Dyer**, HRYF Board Member **Bruce Fink**, District Newsletter **Harvey Gray**. Rotarian Guests within D5000: **Alan Lloyd** (Windward Oahu). Guests of RCPH members: **Laura Fink** guest of **Bruce Fink**, **Anita Owens** guest of **Doug Taylor**.



Anita Owens

IN THE WAKE

*Laura &
Bruce Fink*



CELEBRATIONS

Member Inductions: **Doug Taylor** inducted Feb. 13, 1984 sponsored by **George Topic**.

Member Birthday: **Bob Fujii**, Feb. 13.

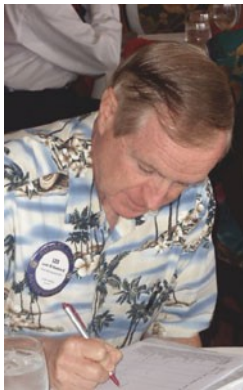
Wedding Anniversaries: **Ellie and Ron Kaanaana**, Feb. 13. **Willa and Jim Gardner** Feb. 14th. **David and Liwayway Arashiro**, Feb. 14th.

ACKNOWLEDGEMENTS

"I Can" donators: **Bruce Fink, Connie and Gene Kraus, Donna and John McLaughlin, Jim Varner, Alan Lloyd**.

HAPPY BUCKS

Happy Bucks: **Bruce Fink** \$20 to the HRYF, his daughter home for a week and son is back from Afghanistan. **Les Hunkele** \$10 to the Rotary Foundation because it was on Feb. 14th that they took custody of their adopted daughter Kira, so it is a "Gotcha" day. **Patrick Matsumoto** \$20 to the Rotary Foundation, because the scholarship committee had the honor of interviewing five students who had applied for scholarships and all went well. **Shirley Robinson** \$10 to the Rotary Foundation because they are going on a cruise. **Doug Taylor** \$10 to the Rotary Foundation, he attended a Rotary meeting on Sunday in Waianae for a couple of hours and met President Elects going to PETS. **Jim Varner** \$5 to



*Vice President Les
Hunkele takes notes
for Channel Marker*

the club because he and **Nancy** hosted two Rotary International Fellowship members from Taipei for two nights.

ANNOUNCEMENTS

Bill Bow said for those going to Hiroshima, there will be a quick meeting right after the regular meeting today.

John McLaughlin said that Donna is looking for volunteers for the Interact Conference, Feb. 23, 24, 25.

John Doty reminder everyone that March 3rd is Swirls encouraged the members to continue selling tickets.

Harvey Gray said that several tables have been purchased.

Editor's note: Pearl Harbor Swirls has been rescheduled for May 19, 2012

PROGRAM

Program: **Jeff** introduced pianist **Bill Walker** and his wife and singer **Jeanine Walker** from Nashville Tennessee by way of Makaha Valley.

William "Bill" Walker was born in Sydney, Australia on May 28, 1937. He attended Sydney University's Conservatorium of Music before moving to South Africa.

In 1959, he began working at RCA Records in Johannesburg, South Africa. One of his tasks was to arrange, conduct and record cover versions of songs that were popular in America. While there, he worked with many country stars who were touring Africa, including **Jim Reeves**. **Reeves** also filmed the movie *Kimberley Jim* in South Africa, for which **Walker** wrote the score. **Reeves** offered **Walker** the position of musical director on a new television series he was set to host. **Walker** moved to the United States and arrived in Nashville, TN just in time to learn that **Reeves** had died in a plane crash.

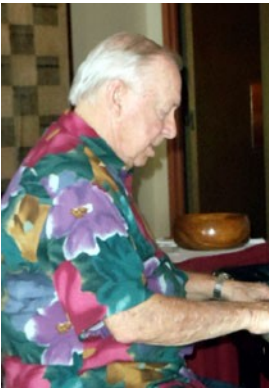
Walker decided to stay in the U. S. and apply for citizenship. Once settled in Nashville, he connected with **Chet Atkins**, who was working with artist **Eddy Arnold**. **Atkins** asked **Walker** to do orchestral arrangements for **Arnold's** album "My World," which contained the #1 single "Make The World Go Away."

IN THE WAKE

That record became **Walker's** first gold record. **Walker** also arranged orchestra scores for concerts and television appearances.

In the late 1960s, **Bill** was offered the position of musical director for the *Johnny Cash Show* on ABC. **Cash** would end every show by shouting, "Good night, Bill Walker!" The show lasted for 58 episodes.

Walker continued as music director for other **Johnny Cash** television specials after the series was cancelled, including **Johnny Cash's** Christmas specials.



Bill Walker at the piano

The **Bill Walker** Orchestra was also featured on *The Statler Brothers Show* on TNN, for the show's entire seven year run. The Statler Brothers Show was the top-rated show on TNN during its entire tenure. **Walker** also directed the music for three of the Statler Brothers' TV specials.

Jeanine Walker graduated from the University of Mississippi where she played leading roles in "CAROUSEL," "DAMN YANKEES," "KISS ME, KATE," "IMAGINARY INVALID," and several others. She served as Student Body Secretary and has been inducted in the Ole Miss Hall of Fame.

While still in Jackson, she spent 2 years at the McWillie School, 2 years at WLBT-TV singing with the Jules Barlow Orchestra and played leading roles in "CAMELOT" and "WONDERFUL TOWN" for the Jackson Little Theater.

In Hollywood she was a "Straight Girl" for Bob Hope and did a one year tour with the KIDS NEXT DOOR Variety Group

In Nashville **Jeanine** was the lead singer for the NASHVILLE SOUNDS QUARTET (formerly the ANITA KERR QUARTET, and more recently the SOUNDS, INC.), working on recordings and television with major recording artists, such as Perry Como, Pete Fountain, Johnny Cash, Eddy Arnold,

Tennessee Ernie Ford, Al Hirt, Conway Twitty, Loretta Lynn, Kenny Rogers, Garth Brooks, Willie Nelson, Tricia Yearwood, George Burns, and Ann-Margret, to name only a few.

Jeanine married **Bill Walker**, well-known Pianist, Arranger, Conductor, Record Producer, and Music Director for Theatre, Recordings, and Network Television and now her own personal accompanist in 1971, clever, yes?

She served as Managing Director of 3 music publishing companies, as Vice-President of Con Brio Records, and still serves as Vice-President of W. W. Productions, Inc. and M. C. Construction Co., Inc.

Jeanine taught voice for 9 years at Belmont University's highly acclaimed Commercial Music School.

Her SOUNDS, INC., with the Bill Walker Orchestra, could be seen every Saturday night on the very popular Statler Brothers Show.

In 2002, they released their CD project entitled,

Jeanine & Bill Walker: THE CONCERT COLLECTION – "TELL ME THE STORY OF JESUS," which contains requested selections from concerts they do for churches and civic clubs throughout the U.S. and many other countries. In 2004, they released Volume 2, "MY TRIBUTE," and in 2007,

released **JEANINE & BILL WALKER: THE CHRISTMAS COLLECTION – "HOLY NIGHT."** These recordings are available from BNJ Records of Nashville, Tennessee. "HAVE VOICE, WILL TRAVEL!"

Jeanine opened by telling the men they had only 8 hours left to shop for their special Valentine and sang a medley of songs to celebrate Valentine's Day



Jeanine Walker sings for us

IN THE WAKE

including: *My Funny Valentine*, 'Til there was you, *It's a big wide wonderful world*, *If I loved you, I'm getting married in the morning*, *On the street where you live*, *The rain in Spain*, *I've grown accustomed to her face*, *Wouldn't it be lovely, I could have danced all night*, *Young Lovers*, *The Rain in Spain*, *I'm just a girl who can't say no* and many more songs. **Jeanine** was accompanied by her husband **Bill** on the piano.

After the concert **Bill** and **Jeanine** answered questions and talked story with the members. **Connie** informed members that she met **Bill** and **Jeanine** in 1978 when they were paired in a Tennessee Ernie Ford Golf Tournament at Hickam AFB. The Tournament was a benefit for the Pop Warner Football Program.

President Connie thanked them for their performance



President Connie, Bill & Jeanine Walker

and asked them to sign a children's book, *Whose Slippers are Those?* By **Marilyn Kahalewai**, that will be donated to Aiea Elementary School in their honor.

ADJOURNMENT

Sam Heard led us in the Four-Way-Test.

Rotary eClub One How To Complete A Make-Up

1: Read a variety of current articles in our Programs section and/or choose articles from our Archived Programs list and/or information from our Avenues of Service pages. You will be required to answer questions. There is space on the makeup request form for up to three articles to be reviewed, however you will need to read more than three to meet your 30 minute visit obligation.

2: At the end of your 30 minute visit click on Make-up Request Form from the drop-down menu at top of page OR the bottom of each make-up program.

3: Read Makeup Request Form carefully, and follow instructions. A Make-Up Form will appear once you press the SUBMIT button (one time only) and an email copy will be sent to the email address you provided.

PRINT YOUR MAKE-UP FORM

Once your make-up appears, if you know the email address, you can also click on File, Send and email a copy to your club secretary.

Website:

<http://www.rotaryclubone.org/how-to-makeup.htm>

February

World Understanding Month

Feb 27: A. Lynn Tremblay, Pearl Harbor Subs

March

Literacy Month

Mar 5: Honorable Patrick Border, North Korea

Mar 13: Mike Smola, Mission Houses Museum

Mar 20: TBA

Mar 27: TBA

THE 4-WAY TEST

Of the things we think, say or do

1. Is it the TRUTH?

'Oia 'i'o i keia o'lelo

2. Is it FAIR to all concerned?

Kupono ia ka kou

3. Will it BUILD GOODWILL and
BETTER FRIENDSHIPS?

Kukulu lokomaika'i a me pilialoha maika'i a'e

4. Will it be BENEFICIAL to all concerned?

Pono ia ka kou